



Meridian Solar Farm

EN010169

Volume 2

Plans

2.8 Indicative and
Illustrative Layout Plans and
Sections – Section A Solar
Development Area

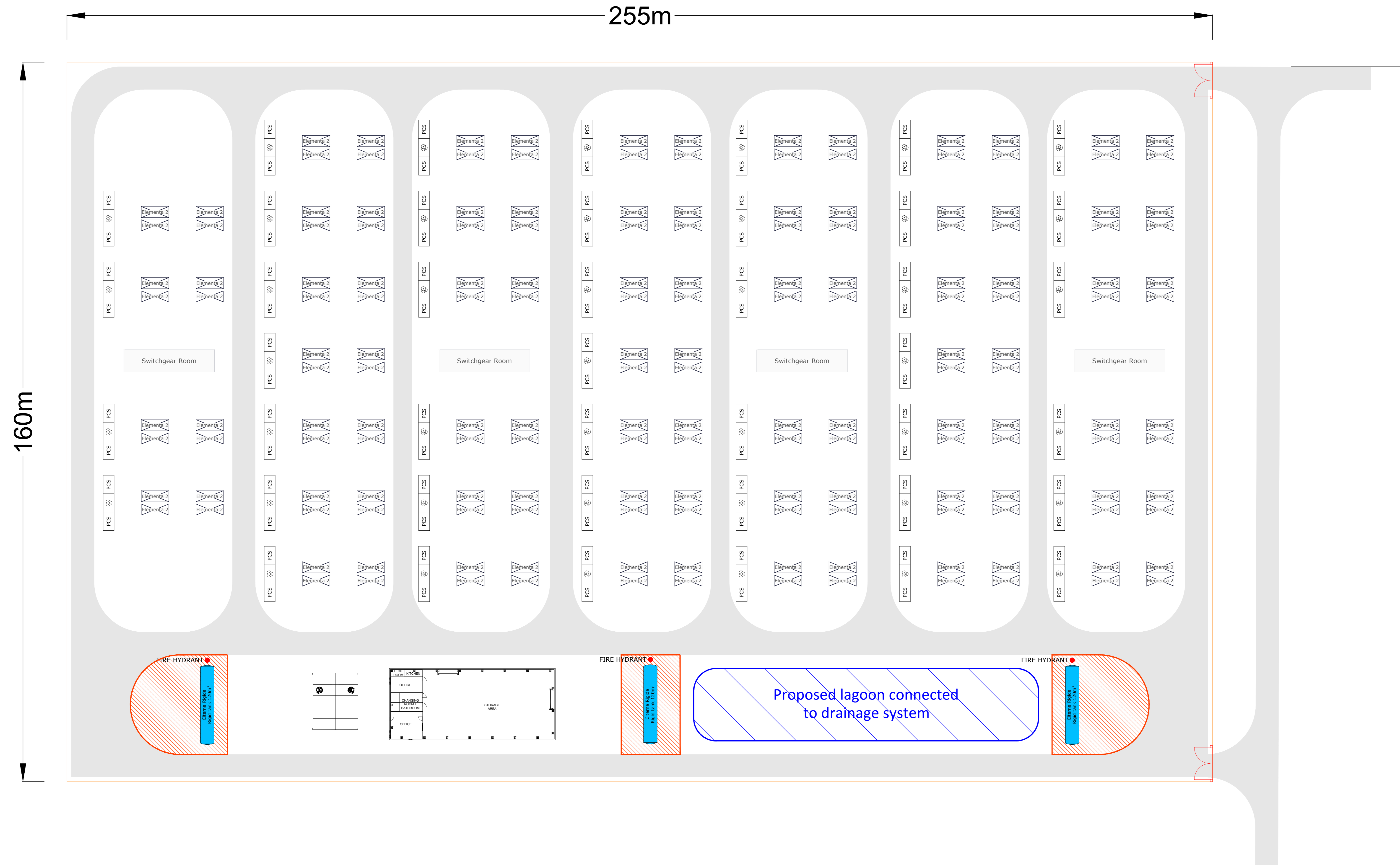
APFP Regulation 5(2)(o)

Infrastructure Planning (Applications:
Prescribed Forms and Procedure)
Regulations 2009

March 2026



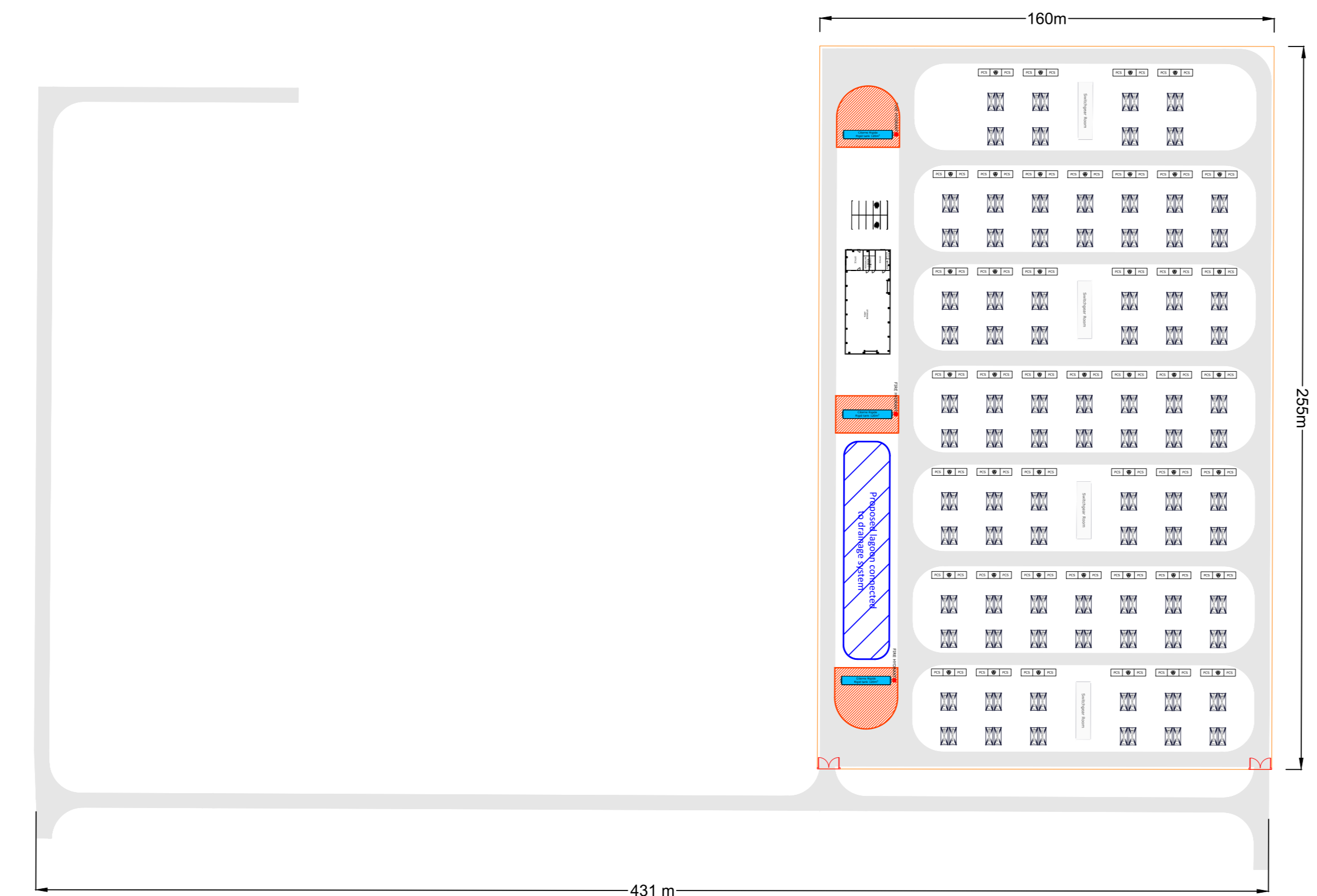
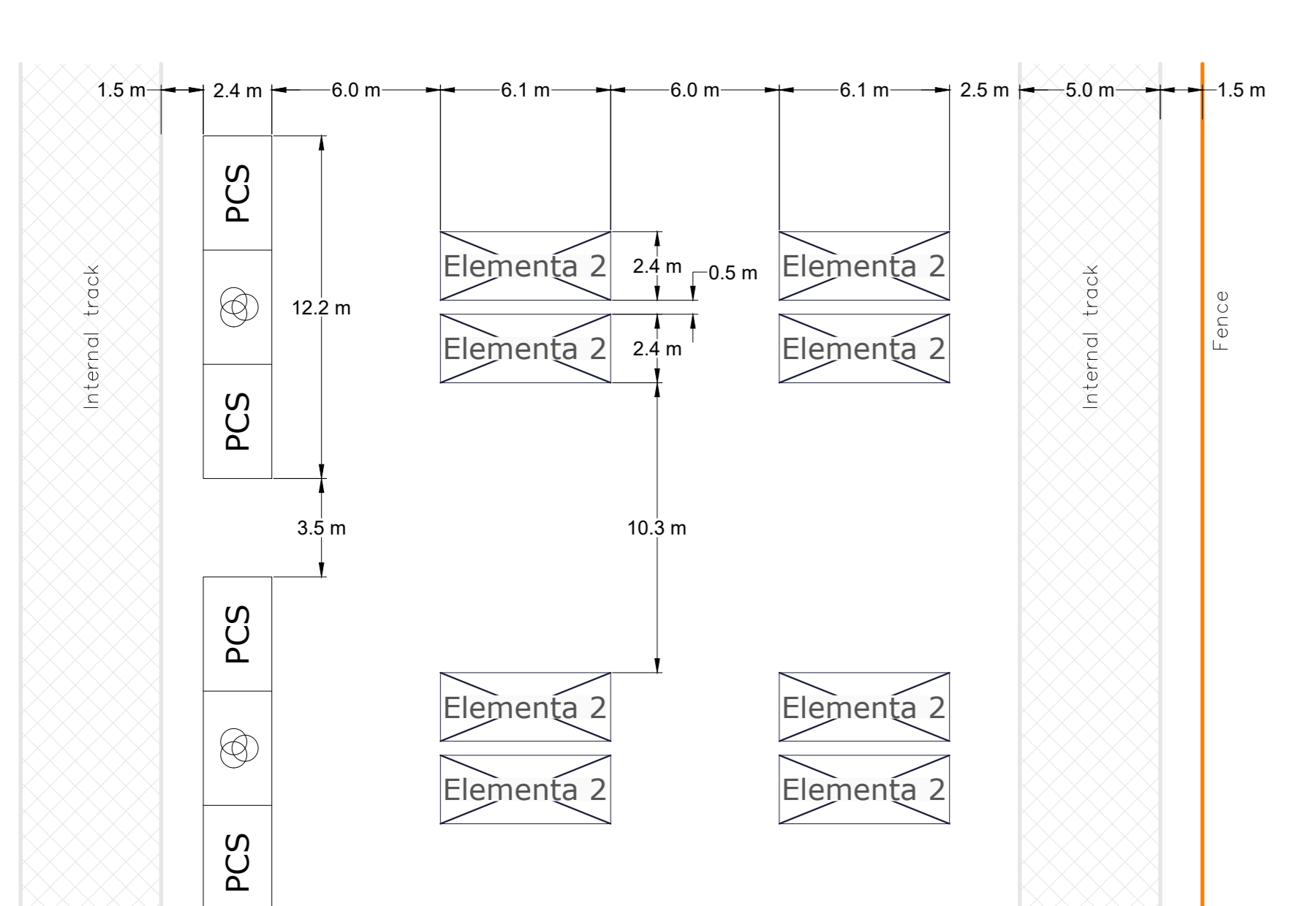
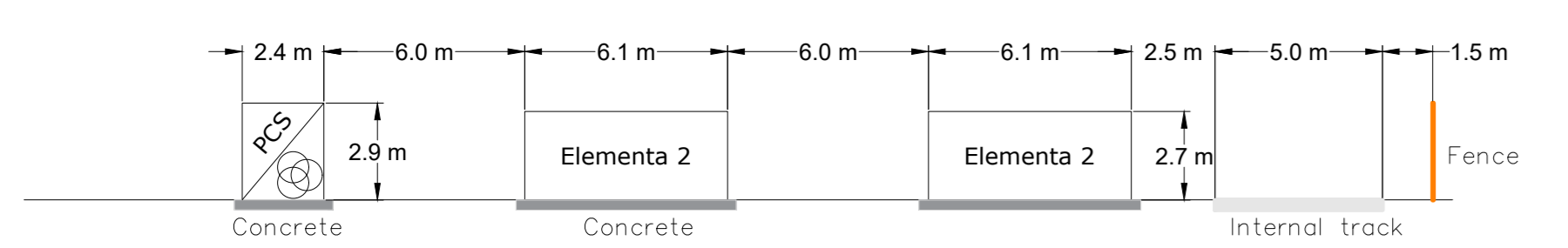
MERIDIAN SOLAR FARM
BESS Design
ENGINEERING DRAWING
SECTION A SHEET 1 OF 4



Fenced area	Surface : 40.2 ha	Perimeter : 825 m
Capacity	Installed : Energy : 700MWh	Power : 350 MW
Connection	HTA	
Battery	Reference : Trina Elementa 2.0	172u
	Dimensions : 6.058 x 2.438 x 2.438 m	
	Discharge duration : 2 h	
	Energy per enclosure : 4.073 MWh	
PCS	PCS : SG3300UD	92u
	Arrangement : [] Int.BESS [X] Int.Transfo. [] Independent	
	Transformer Station : SC6900UD-MV	46u
Transformer	Dimensions : 12.192 x 2.896 x 2.438 m	

Legend :

	Battery container	6.058 x 2.438
	Transformer/inverter container 40ft	12.192 x 2.438
	Switchgear Room	20x5
	Fence	7 m
	Security gate	5 m
	High-duty roadway	120 m ³
	Pump area	
	Rigid tank	
	Fire hydrant	
	Drainage system	
	Staging area	



A00	03/26	For review	EZA	ABO	MHA
Issue	Date	Remarks	Drawn	Checked	Approved

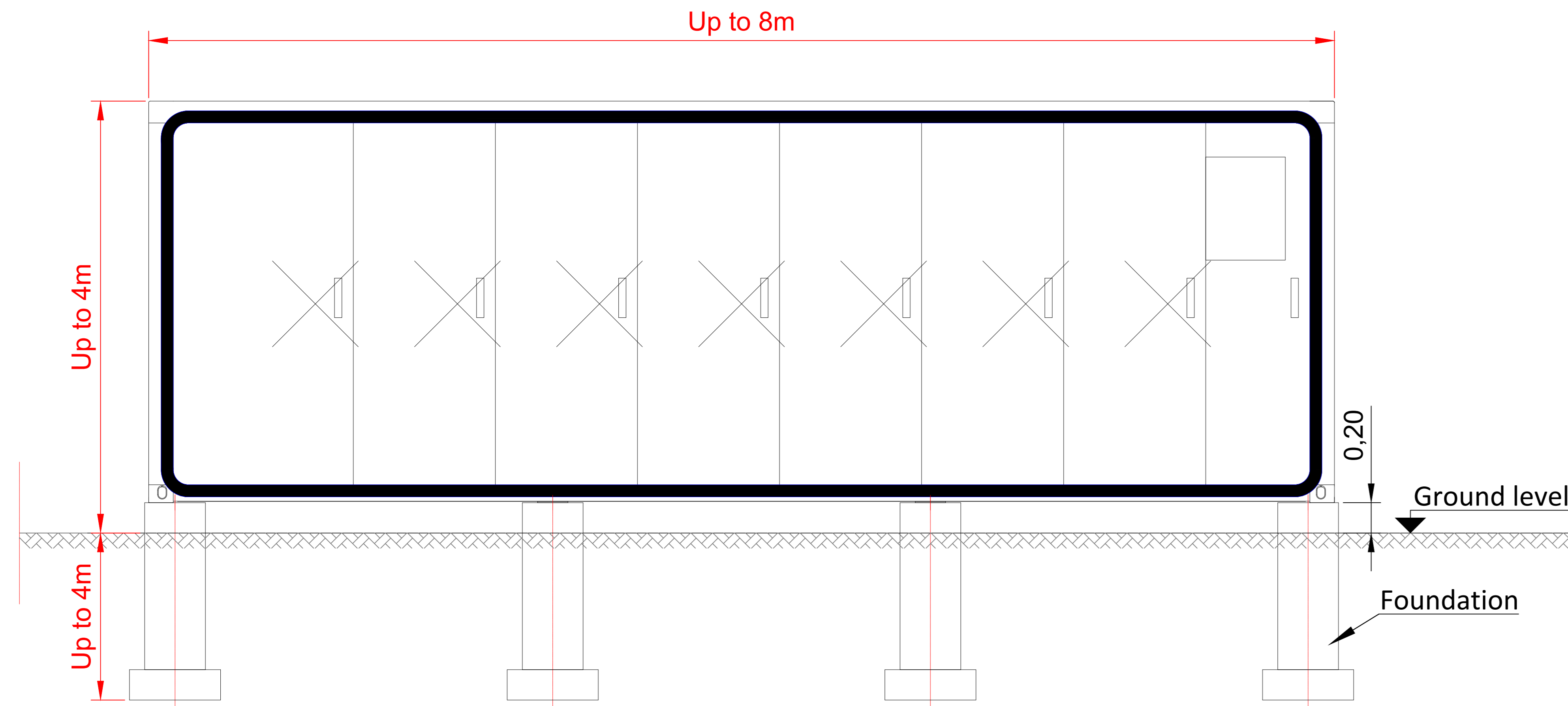
MERIDIAN SOLAR FARM
BESS Design
ENGINEERING DRAWING
SECTION A SHEET 1 OF 1

Application Number: EN010169

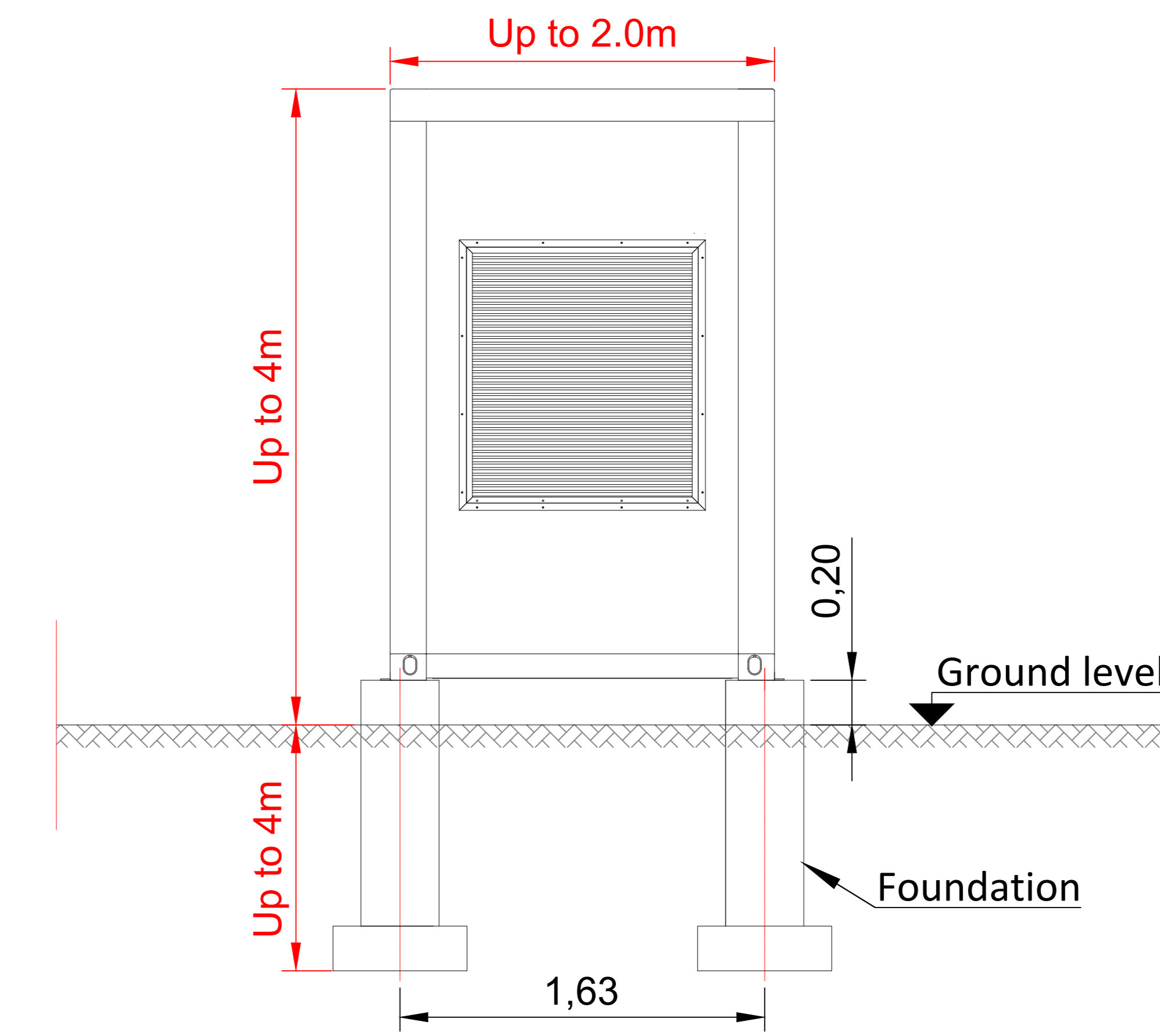
Scale	Sheet Size: A0	Sheet: SHEET 1 OF 1	Issue: A00
-------	----------------	---------------------	------------



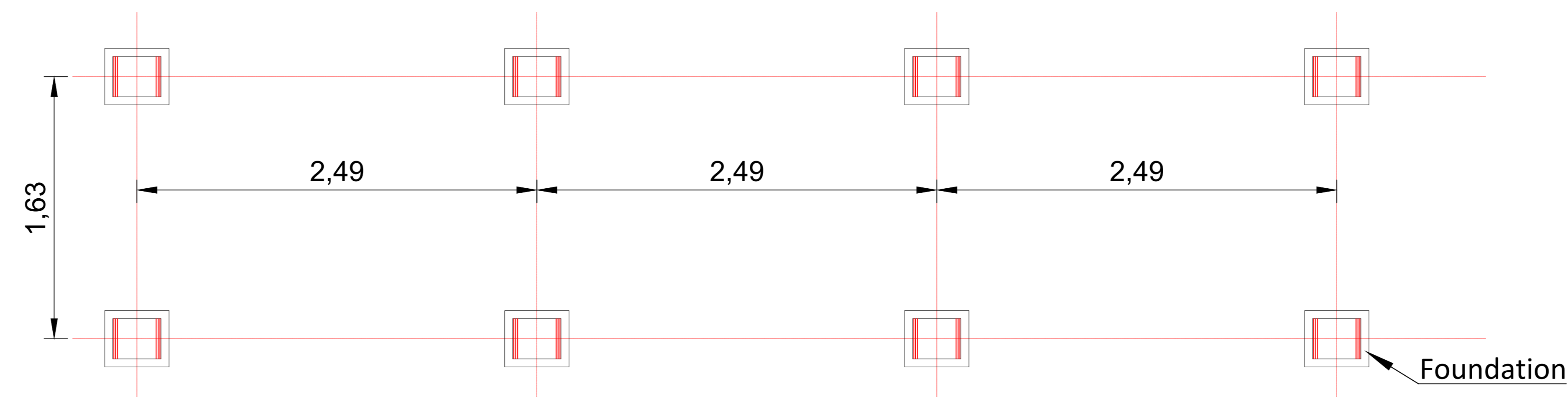
Front view



Right view



Foundation plan view



NOTES :

1. Concrete Raft or Piled Foundation
2. The foundation dimensions must meet the requirements of the bearing capacity of the bearing stratum. The depth of the foundation must reach the bearing stratum with the sufficient bearing capacity.
3. Container has to be anchored to the foundation. The solution will be produced by the supplier.

Issue	Date	Remarks	Drawn	Checked	Approved
A00	03/26	For review	EZA	ABO	MHA

Title

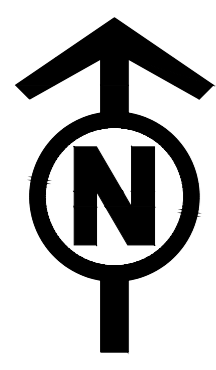
MERIDIAN SOLAR FARM
 BATTERY STORAGE LAYOUT
 ENGINEERING DRAWING
 SECTION A SHEET 1 OF 1



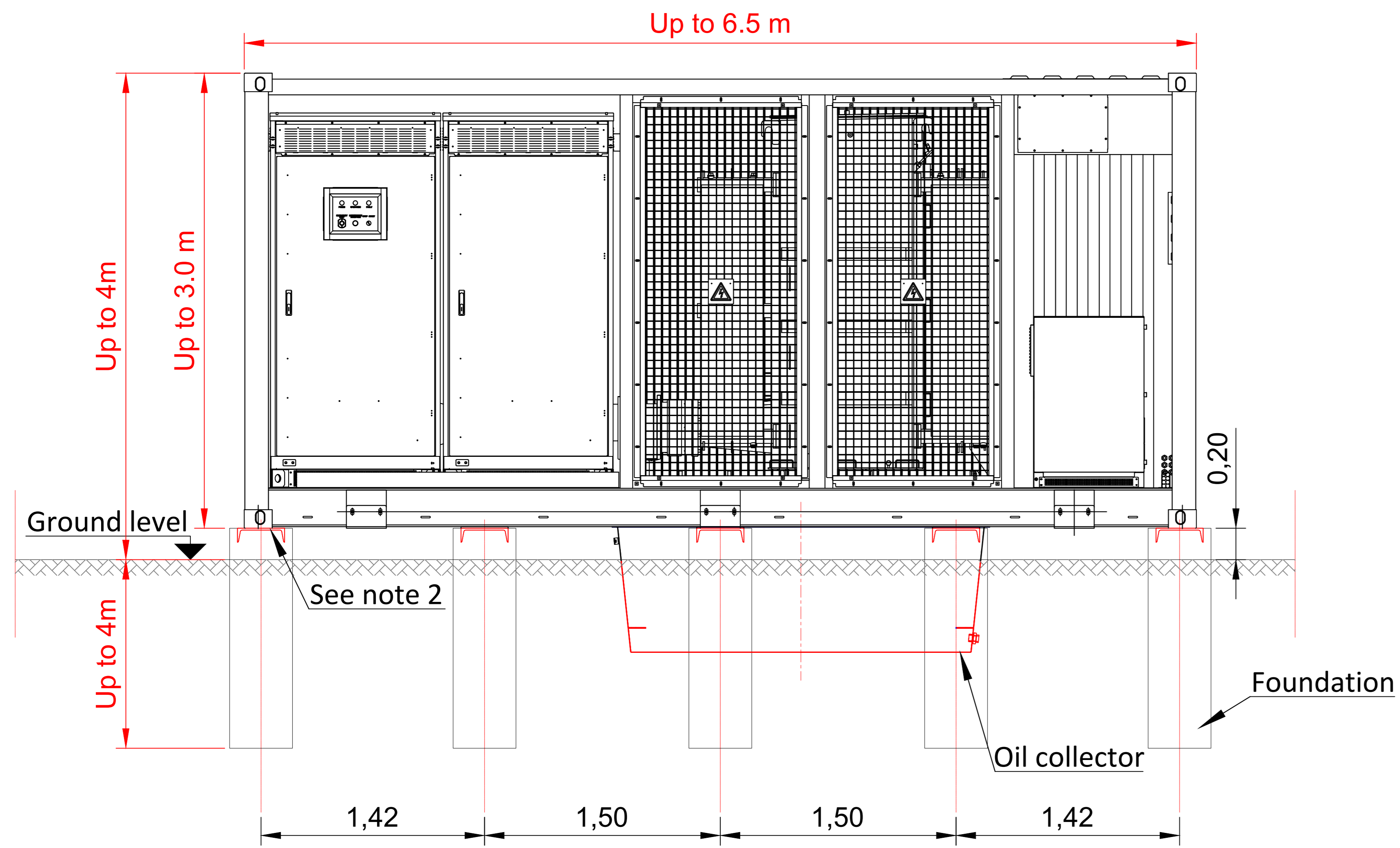
Application Number EN010169

Meridian Drawing Reference

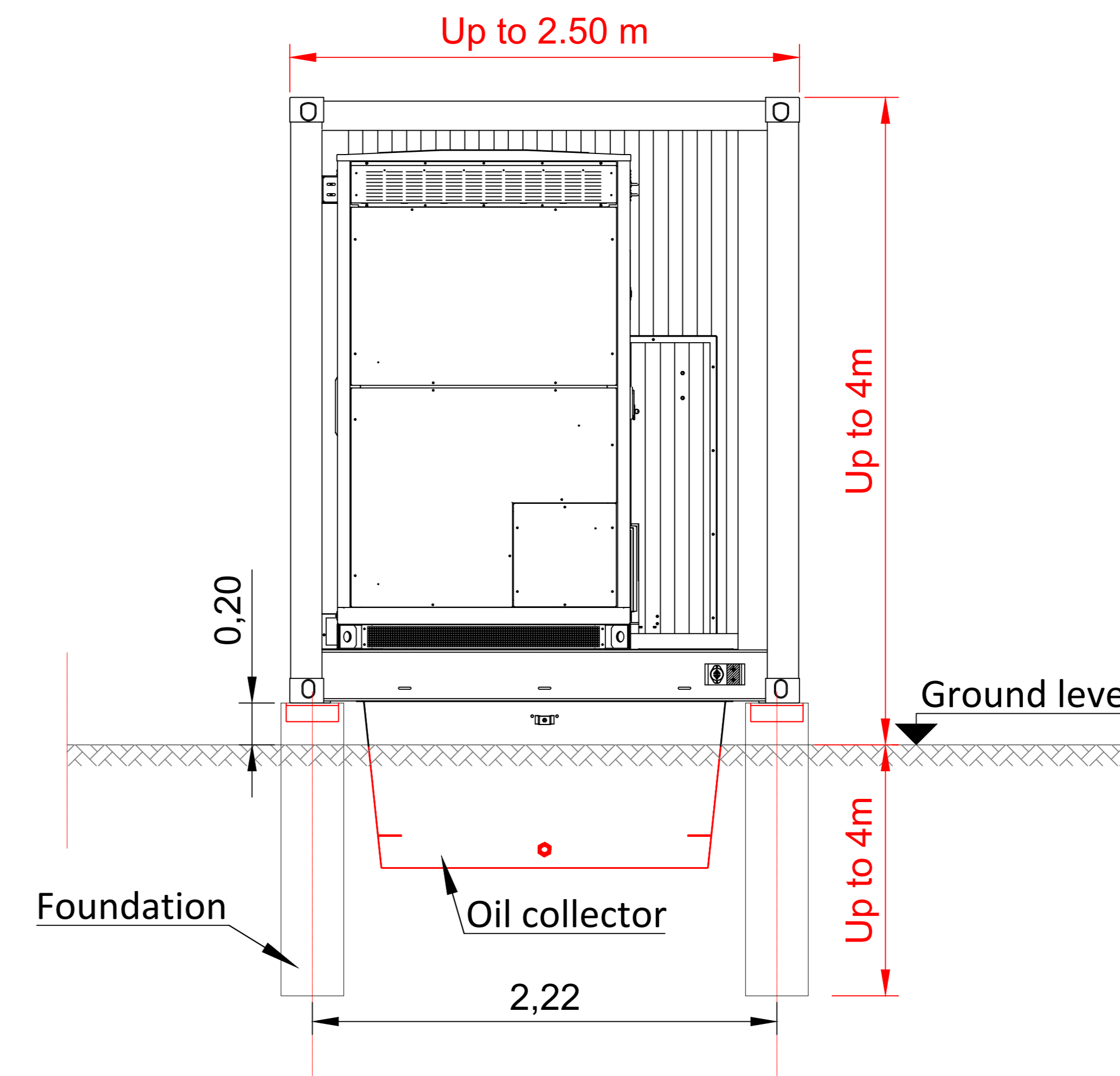
Scale	Sheet Size	Sheet	Issue
	A0	SHEET 1 OF 1	A00



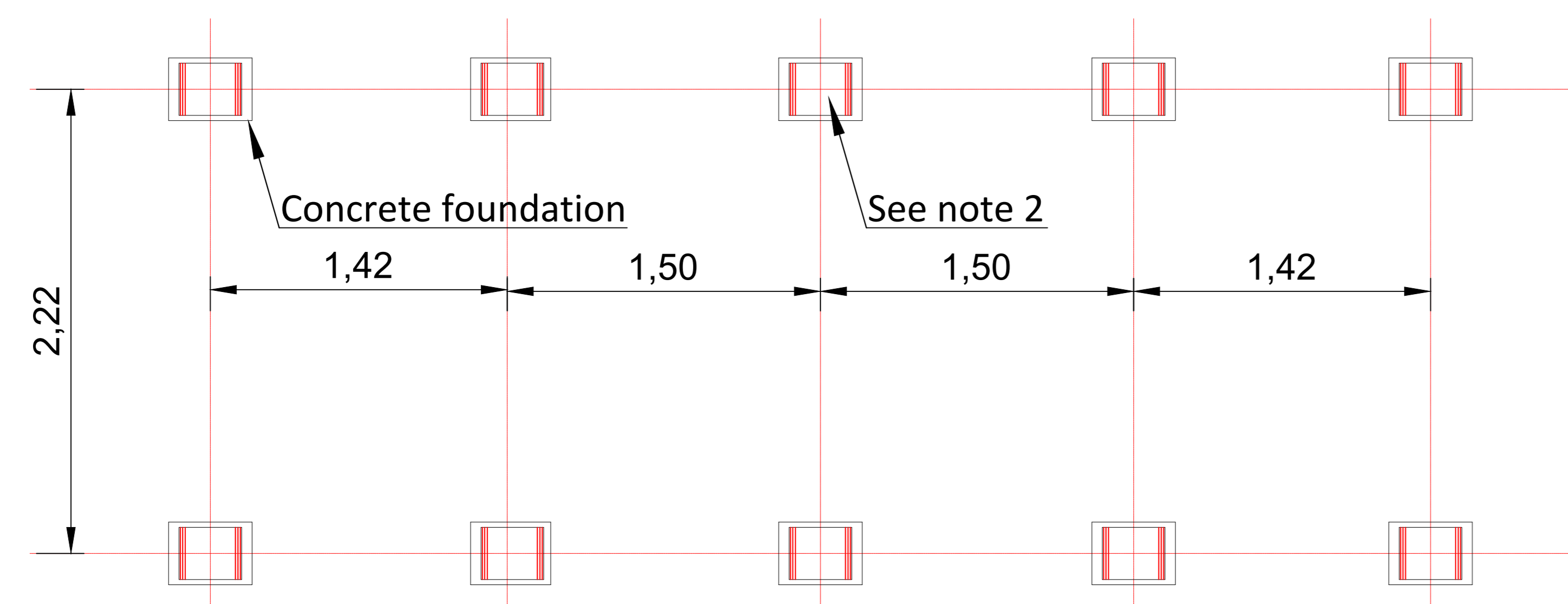
Front view



Side view



Foundation plan view



NOTES :

1. The foundation dimensions must meet the requirements of the bearing capacity of the bearing stratum. The depth of the foundation must reach the bearing stratum with the sufficient bearing capacity.
2. Container has to be anchored to the foundation. The solution will be produced by the supplier.
3. Power Conversion Unit (PCU) : means the containerised solution consisting of one or more inverters, transformer and ring main unit along with auxiliary supplies and other accessories.

Issue	Date	Remarks	Drawn	Checked	Approved
A00	03/26	For review	EZA	ABO	MHA

Title

MERIDIAN SOLAR FARM
SOLAR STATION
ENGINEERING DRAWING
SECTION A SHEET 1 OF 1



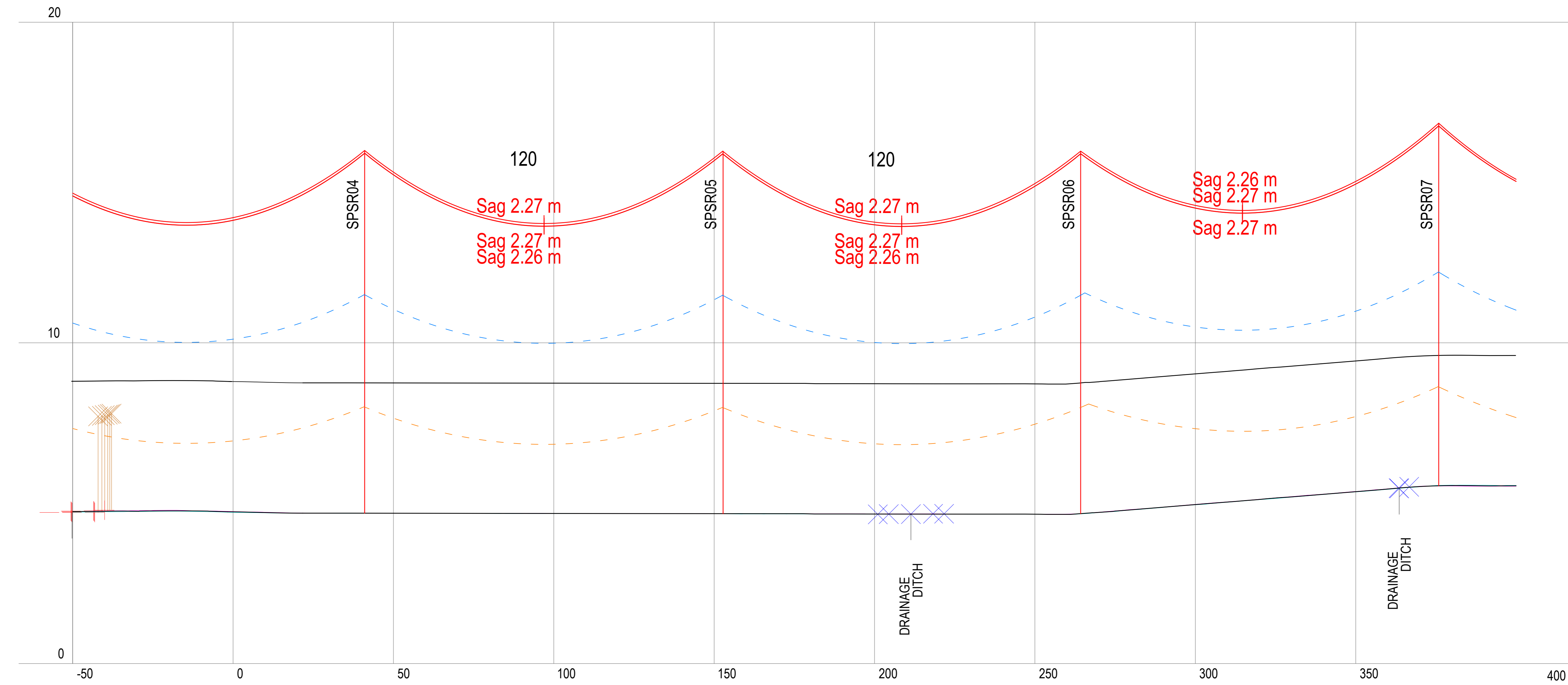
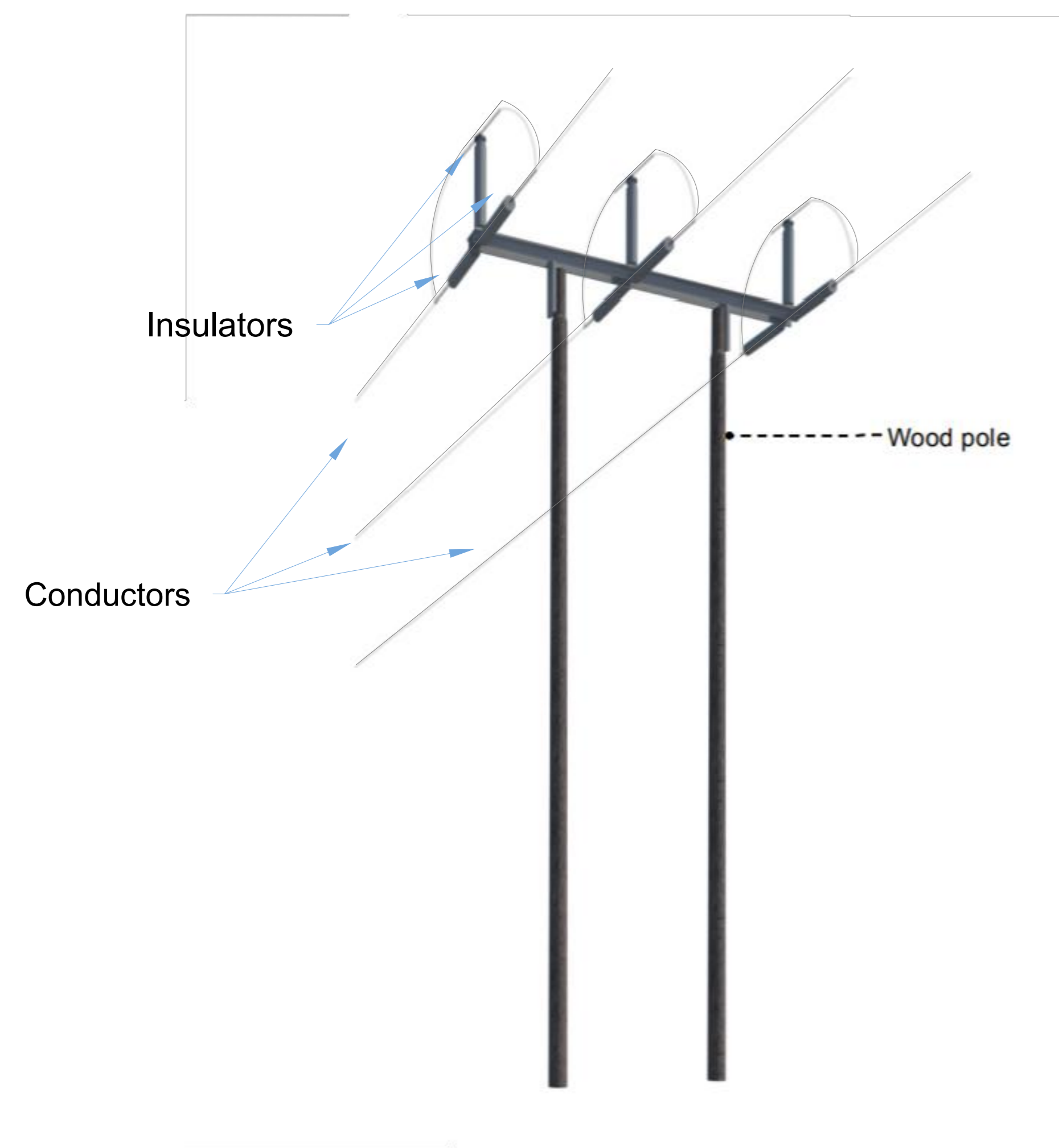
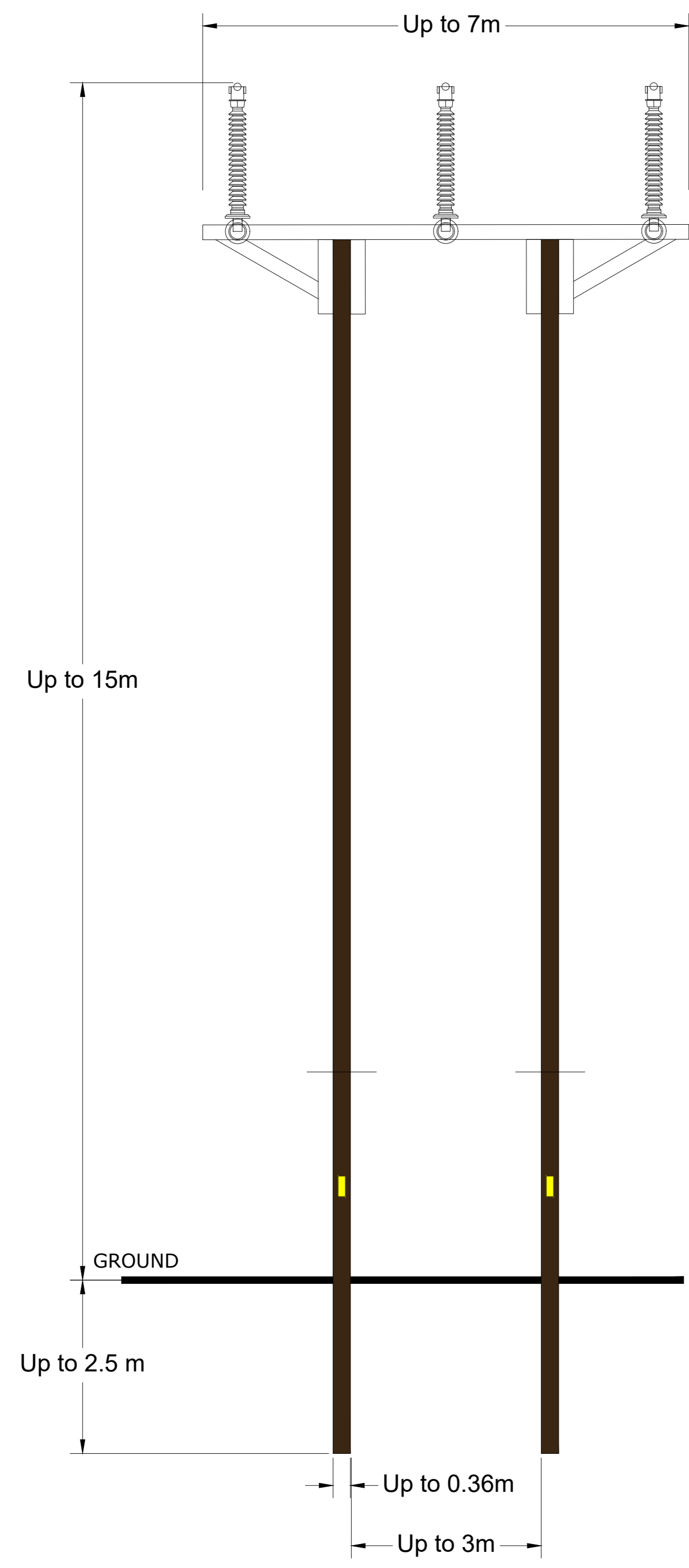
Application Number EN010169

Meridian Drawing Reference

Scale	Sheet Size	Sheet	Issue
	A0	SHEET 1 OF 1	A00



MERIDIAN SOLAR FARM
 ILLUSTRATIVE VIEW WOOD POLE TRIDENT
 DESIGN 132KV
 ENGINEERING DRAWING
 SECTION A SHEET 4 OF 4



- ✕ FENCE
 - ✕ RIVER - NAVIGABLE
 - ✕ TRACK
 - ✕ ROAD
-
- KEY:
- CONDUCTOR (@75 DEG C)
 - - - LOWER CONDUCTOR 3.6m ELECTRICAL CLEARANCE (@75 DEG C)
 - - - LOWER CONDUCTOR 6.7m GROUND CLEARANCE (@75 DEG C)
 - - - 5.0m OFFSET LEFT

A00	03/26	For review	EZA	ABO	MHA
Issue	Date	Remarks	Drawn	Checked	Approved

Title

MERIDIAN SOLAR FARM
 ILLUSTRATIVE VIEW WOOD POLE
 TRIDENT DESIGN 132KV
 ENGINEERING DRAWING
 SECTION A SHEET 1 OF 1

Application Number

EN010169

Meridian Drawing Reference

Scale	Sheet Size	Sheet	Issue
	A0	SHEET 1 OF 1	A00